

*Women of the Word*  
*CALVARY ROAD BAPTIST CHURCH*

# A Year of Pilgrimage

March 21, 2008

Volume 4, Issue 3

## Inside this issue:

### Page 1

Ladies Tea

Mother Daughter Banquet

### Page 2

Our Website

News and Items of Interest

Books to Consider

Pilgrimage with Debbie

### Page 3

Wisdom at Work

Stepping Up

Elizabeth George Event

### Page 4

Women of Faith

What do we Pursue in our

Pilgrimage

## Pilgrimage Around the World

## LADIES TEA

**Saturday, April 19, 2008**  
**2pm**

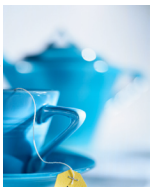


*You will show me the path that leads to life:  
Your presence fills me with joy and brings me pleasure forever.  
Psalm 26:11*

Relax and fellowship over tea and delectables as we pilgrimage around the world.

Enjoy tea sandwiches and lovely desserts and fruits on a multi-cultural menu, along with various teas (possibly Chai Tea, African Red Tea, and others).

Hear testimonies of ladies describing their faith pilgrimage. Fellowship with ladies at tables representing different countries, such as Africa, China, Japan, Italy, and others, while listening to multi-cultural music and entertainment.



## There will be door prizes.

Child care will also be provided at no charge. Sign up at the women's ministry table in the church foyer outside the Pastor's office. This is a ticketed event. Cost is \$12. Guests are \$8.

If you are interested in hosting and decorating a country-themed table, email Penny Shawler at [Butterfly03@comcast.net](mailto:Butterfly03@comcast.net)

## Mark Your Calendar

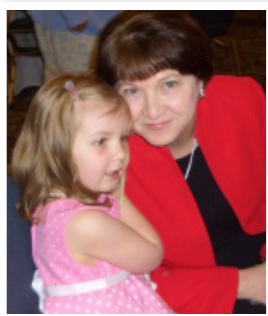
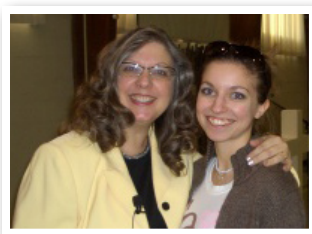
☛ **In the Beginning Supper:**  
*September 20*

☛ **Children Consignment:**  
*September 27*

☛ **God Our Strong Tower:**  
*October 20*

☛ **Christmas Craft Event:**  
*November 16*

☛ **Look for Our 2008-09 Theme in the Fall**  
**GOD AND ME,**  
**Continuing the Pilgrimage**



## Mother Daughter Banquet

ENCOURAGING EACH OTHER ON OUR JOURNEY AS WOMEN

**Friday 6pm • May 9, 2008 • Springfield Hilton**

Mothers and Daughters gather with us and enjoy our annual banquet in the ballroom of the Springfield Hilton. Ladies, if your mother or daughter can't be here, "adopt" another beautiful lady from our community. You will enjoy an evening of joyful fellowship, delicious food, great music and entertainment, testimonies and sharing from God's Word. Invite your friends and neighbors to join with us.



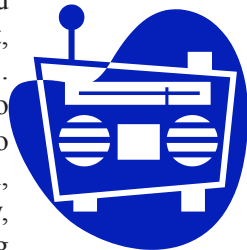
## Our Website:

Have you had the opportunity to check out our women's ministry website? You can do so directly from the church website [www.crbcc.org](http://www.crbcc.org) by clicking on women's ministry or you can go direct to [www.pilgrimagewithdebbie.org](http://www.pilgrimagewithdebbie.org). From the main page, you can check out our current newsletter, news of interest, the blog, links of interest, and various upcoming and past events. You will also find a menu list on the left of all the pages, except the main page. On our notes and outlines page, you will find links to pdf formats of handouts from past events for the last several years. On each event page, you will find pdf formats of handouts for events from Fall 2007 through the February 2008 Retreat. Our newsletters page contains links to all the prior newsletters, some of which contain wonderful recipes. News of Interest is a recent page which will contain anything that might be of interest to our ladies on various topics (radio programs, upcoming conferences, etc). Check out the blog, register, and comment. If you have prayer requests, questions about the ministry or the website, email me at [debbie@judeministries.org](mailto:debbie@judeministries.org). Stay in touch and interactive. I welcome your comments.

Love in Jesus, debbie a

## News and Items of Interest:

Are you in an emotionally damaging relationship or know someone who is? The Moody Radio Program, Midday Connection, broadcasted an interview with Christian Therapist, Leslie Vernick, on January 31, 2008. Leslie spoke at our church several years ago about connecting our head knowledge to our heart. In this recent radio program, Leslie spoke about women in emotionally and often physically, damaging relationships and responded to various viewer questions during the broadcast. To listen to the broadcast, go to [www.middayconnection.org](http://www.middayconnection.org) click on past programs and scroll down to January 31, 2008 and click listen. It is a one hour radio broadcast.



## Books to consider:

**The Grand Weaver**, How God Shapes Us Through the Events of Our Lives, authored by Ravi Zacharias. This is a wonderful book that causes us to consider how differently we might live "if we believed that every event of our lives – from the happy to the tragic to the mundane – was part of a meticulous and purposeful design in which all the events intertwined with breathtaking precision". It was also recommended and cited by Doris McFarland at our retreat in Williamsburg.

**A Woman of Moderation**, by Dee Brestin. "This guide will not only equip you to run to God, your very real Comforter, Consoler, and Friend – but will also teach you scriptural principles on how to approach food so that it becomes a delight instead of a snare to your health and to your soul." There is a difference between physical hunger and soul hunger, and this guide will lead you through scripture as you satisfy your soul's hunger. You can study on your own, but it would be more useful to share together with one other woman. Accountability helps us to grow in our walk with the Lord.

## Pilgrimage with Debbie

Dear Ladies,

The warming of the weather with some signs of Spring approaching causes me to ponder how the season of Spring compares to our spiritual pilgrimage. In Deuteronomy 11:13-15, it says, "So, if you faithfully obey the commands I am giving you today – to love the LORD your God and to serve him with all your heart and with all your soul – then I will send rain on your land in its season, both autumn and spring rains, so that you may gather in your grain, new wine and oil. I will provide grass in the fields for your cattle, and you will eat and be satisfied." There are rains that occur in both the autumn and the spring. In the autumn, the rain encourages the sprouting of seed and new growth, while in the spring, the rain brings the crops to maturity and fruit is produced. In the same way, if while we travel this pilgrimage, we love God and serve Him with ALL our entire being, God will send rains (we must have the rains) and in this season of spring, we will produce spiritual fruit and move toward maturity in our walk with the LORD. What does it mean to love and serve God as He desires? It means to place Him before anyone or anything in our life. It means to seek Him first every moment of the day in all our decisions large and small. It means to spend time in His Word and in prayer. It means to spend time in fellowship with other believers, to encourage them and to be encouraged by them in our daily pilgrimage together with the LORD. What a wonderful picture of the season of Spring in our life – maturity, fruit, green grass, everything in blossom and bloom, birds singing. Ah, the birds singing! Let's sing together and praise the LORD with our mouths, our actions, our total being!

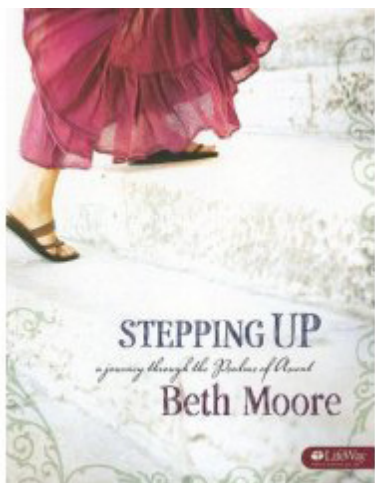
Love in Jesus,  
Debbie Arthur

## DOES YOUR WORK HOLD MEANING AND PURPOSE?

“People spend their whole lives working, yet many have never taken the time to think through the meaning of work in their lives. Society promotes an expectation that work should satisfy our deepest desires for meaning and purpose, and even measures us by our workplace achievements. But what does the Bible say?”

“Some of us do find fulfillment in our jobs, but others resent the time we spend just making ends meet. In *Wisdom at Work*, Kenneth Boa and Gail Burnett will help you take a fresh look – through the lens of God’s Word – at what work is all about, and why the way we view it matters to us and God. With this ‘God’s-eye’ view of work, your workplace can become an arena for personal growth and a means to return glory to the God of work, in Whose image we were created.”

Come study in a relaxed home setting guided by Terry Gerton on alternating Friday evenings. This study is from “The Guidebook Series”, a series of books written to make your spiritual journey interesting, understandable and enjoyable, but most of all, life-changing. The study is five sessions long.



### STEPPING UP

a journey through the Psalms of Ascent  
A Beth Moore Study

“Three times a year, the ancient Israelites traveled to the temple in Jerusalem. Now it’s your turn.”

“Stepping Up: A Journey Through the Psalms of Ascent explores Psalms 120-134. Traveling pilgrims sang these psalms both on the way to the great festivals of the Jews and as key elements of the worship at those festivals. Students will interact with Beth

Moore and the Scriptures in new ways. They will gain a new appreciation for the life of faith as a journey to greater fellowship with and worship of God.”

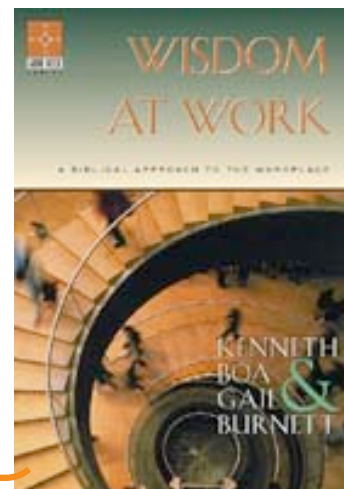
Beth says, “I am expecting nothing less than a new level of relationship and intimacy with God through these psalms. I ask you to settle for nothing less as well. The more we unveil our faces to God and bare our souls to Him, expressing what is on our hearts, the safer we’ll feel with Him and the closer we’ll draw to Him. The cover shows my friend Maayan ascending the south steps to the temple in Jerusalem, the heartbeat of every psalmist. For centuries, the pulse of worshipers could be taken in their rhythmic footsteps to this holy city.”

This introduction week plus six week study, facilitated by Christine Little, will begin on Tuesday morning March 25. Child care will be provided.

## Wisdom at Work

A Biblical Approach to the Workplace  
From “The Guidebook Series”

Friday Evenings on Alternating Weeks  
At the Home of Terry Gerton  
Beginning in April 2008 - 7pm  
No child care Provided  
Cost \$4



Deeper Still 2008 Conference

**With Special Guest:**  
**Elizabeth George**

April 26, 2008

9am – 4:30pm

First Baptist Church of  
Alexandria

To register go to:

NorthStar Women's Network presents:



Special Guest: Elizabeth George  
Author of *A Woman After God's Own Heart*

And I pray that Christ will be more and more  
at home in your hearts as you trust in Him.  
May your roots go down deep into the soil of  
God's marvelous love. Ephesians 3:17

NorthStar  
WOMEN'S NETWORK

[www.northstarwomensnetwork.org/look/events.html](http://www.northstarwomensnetwork.org/look/events.html)

# Women Of the Word

*CALVARY ROAD BAPTIST CHURCH*

6811 Beulah Street

Alexandria, VA 22310

703-922-6700 • [www.crbc.org](http://www.crbc.org)

*Direct contact:*

**Debbie Arthur**

*Director of WOW*

703-451-0422

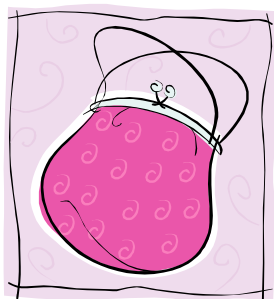
[debbie@judeministries.org](mailto:debbie@judeministries.org)

[www.pilgrimagewithdebbie.org](http://www.pilgrimagewithdebbie.org)



We only have 62 tickets this year. Sign up has already begun, so don't wait to stop by the Women's Ministry Table on Sunday to reserve your ticket and make an initial deposit. Transportation will be provided to and from the church each day of the conference.

Infinite Grace  
July 11-12, 2008  
Verizon Center



## WHAT DO WE PURSUE IN OUR PILGRIMAGE?

Monday Evening 7pm

June 2, 2008

Cottage B

Special Speaker  
our own

**Linda Rhodenhizer**



*Pursue righteousness, godliness, faith, love,  
steadfastness, gentleness. I Timothy 6:11*

Do our purses show what we pursue? Does the type of **purse** we have show what we pursue in our pilgrimage? Join us for fellowship, refreshment and fun as we pursue godly qualities in our pilgrimage. Sign up at the Women's Ministry Table beginning late April. Child care will be provided.